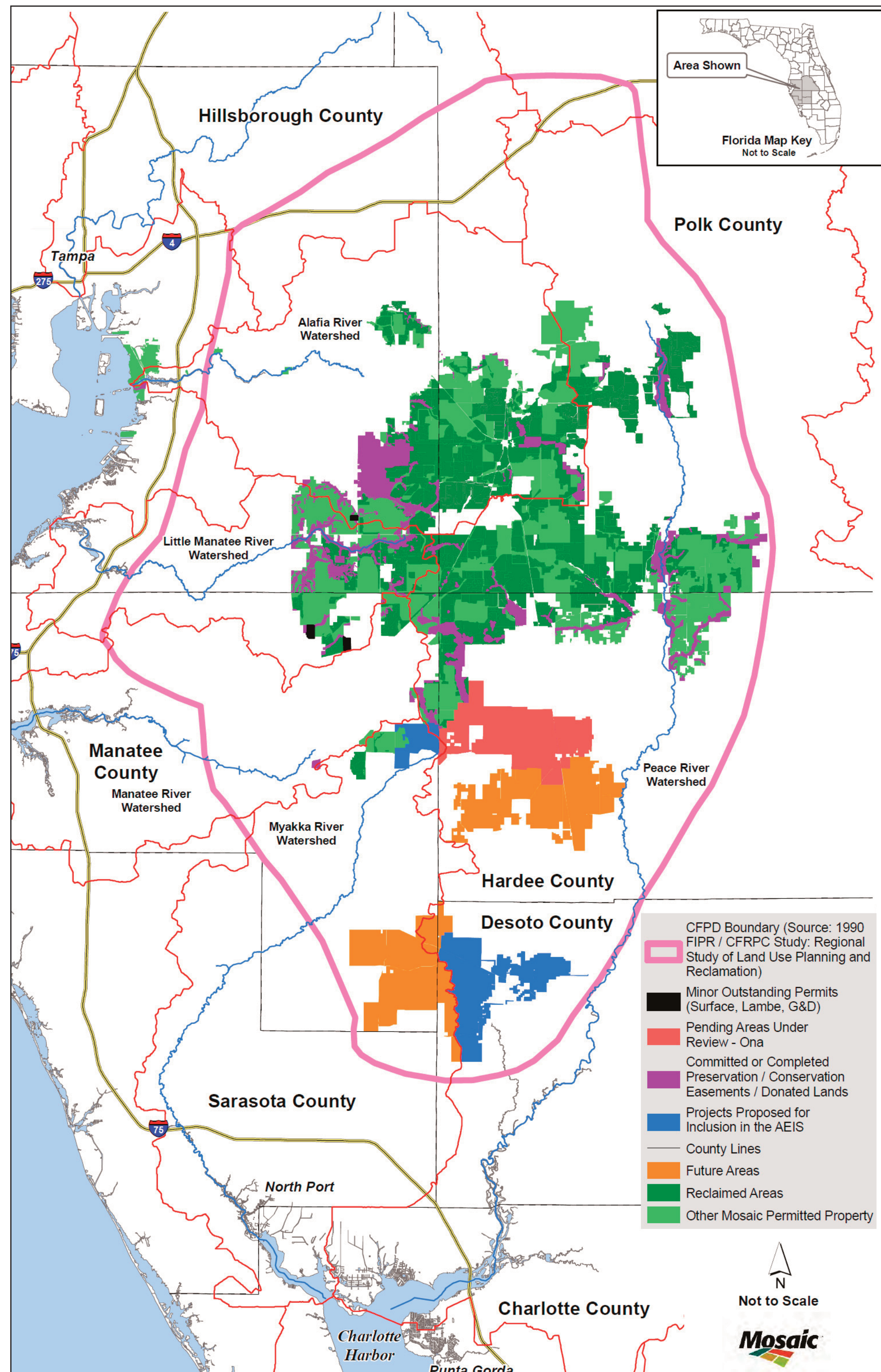
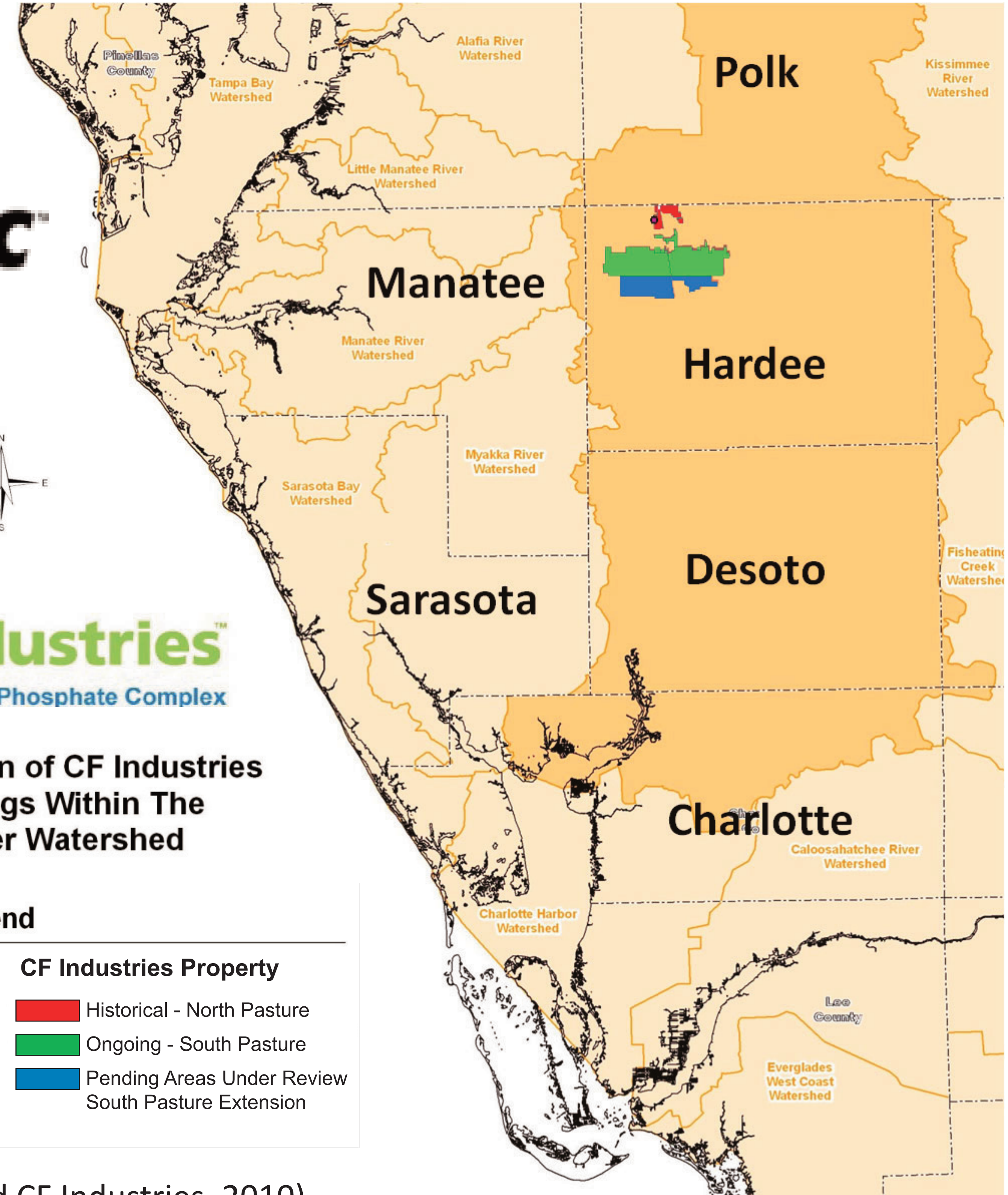
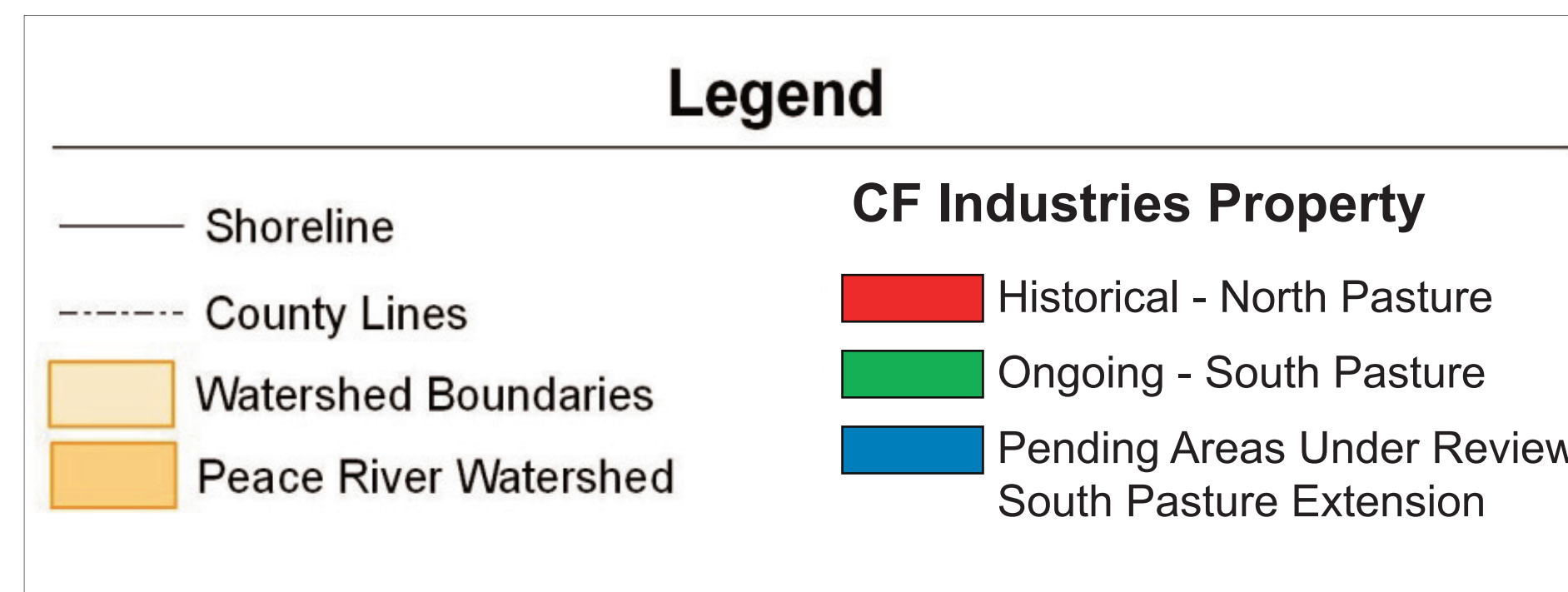


# Water Resources

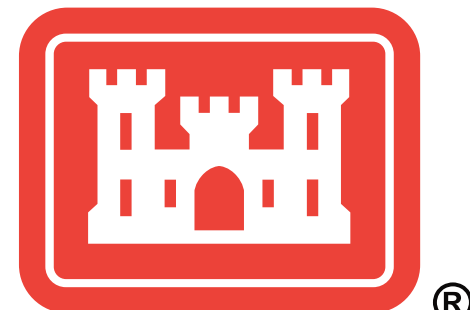
## Mosaic and CF Industries: Historical, Currently Authorized, and Proposed Phosphate Mine Areas (Forseeable Future)



### General Location of CF Industries Land Holdings Within The Peace River Watershed



(Sources: Mosaic and CF Industries, 2010)



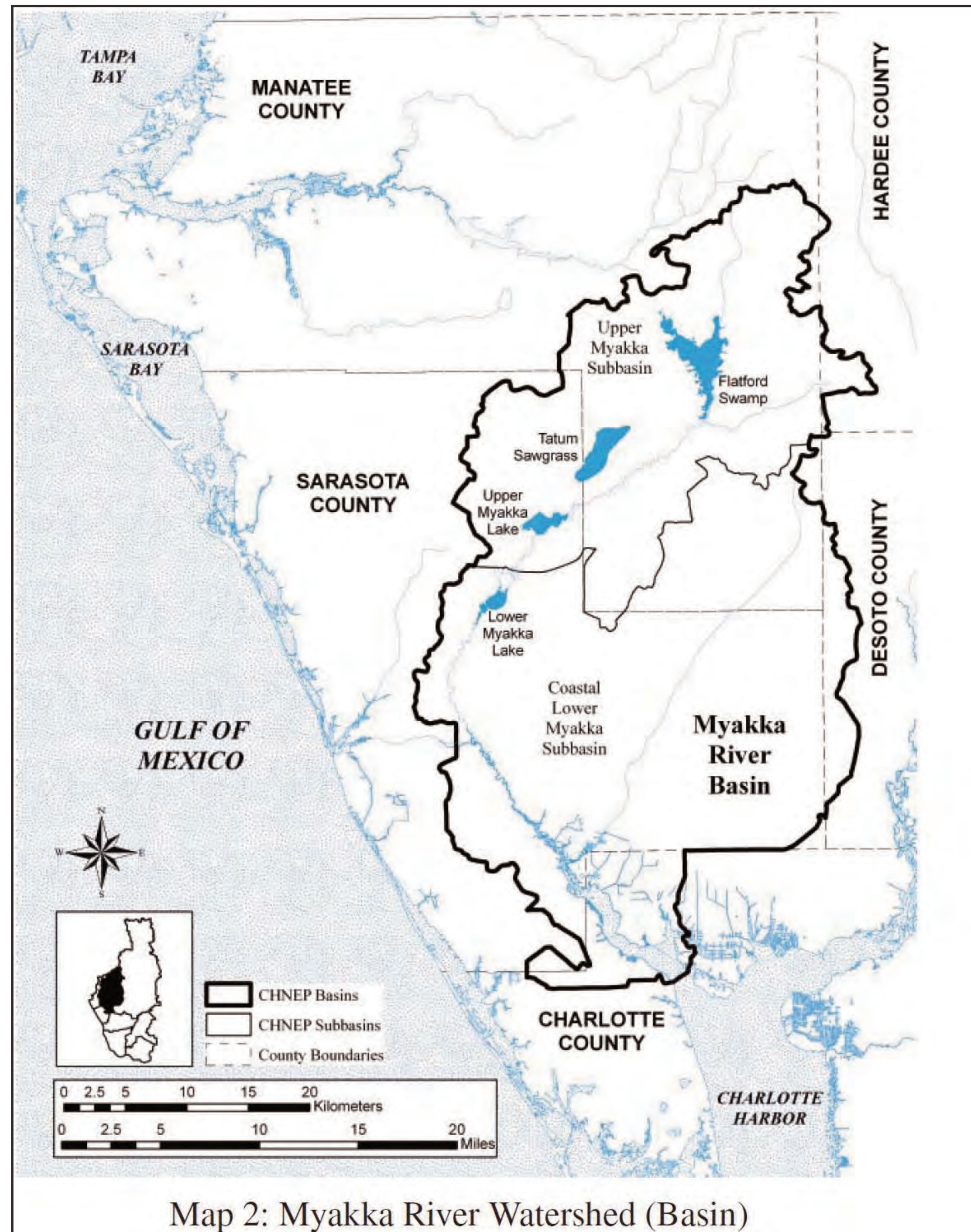
US Army Corps of Engineers  
BUILDING STRONG

Areawide Environmental Impact Statement for Continued Phosphate Mining in the Central Florida Phosphate District

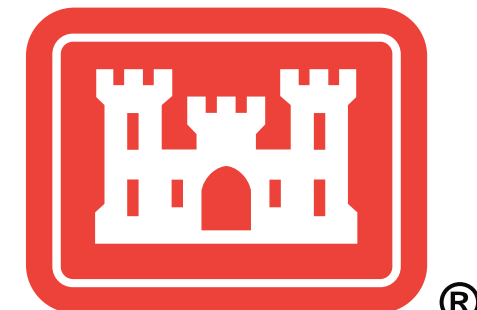
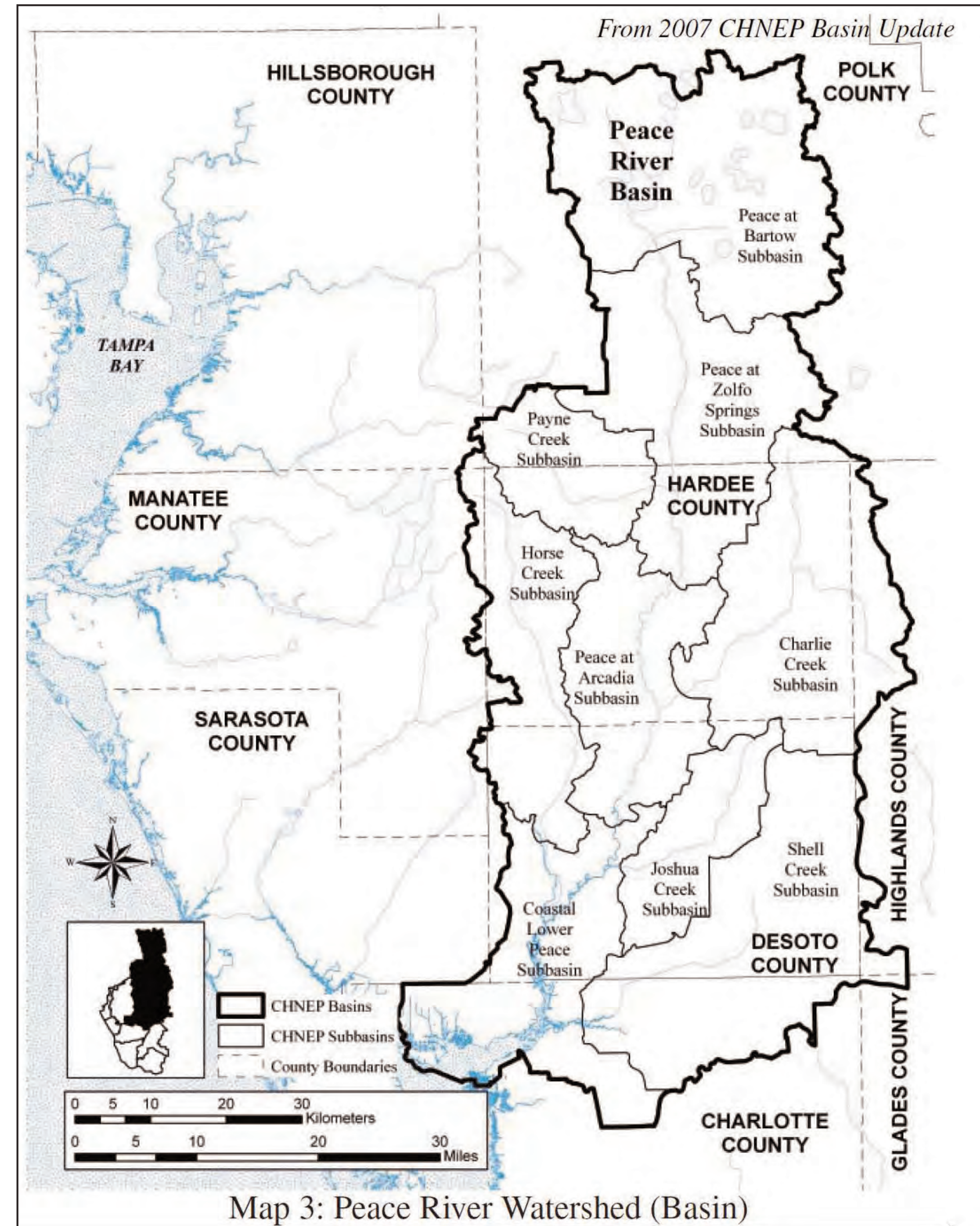
CH2MHILL

# Water Resources

## AEIS Study Area Key Watersheds

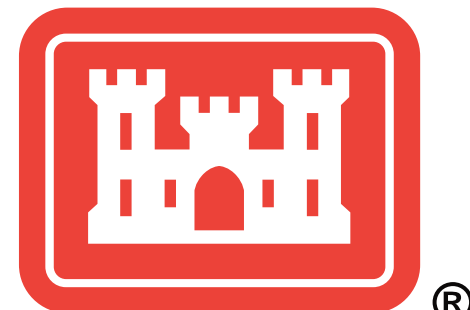
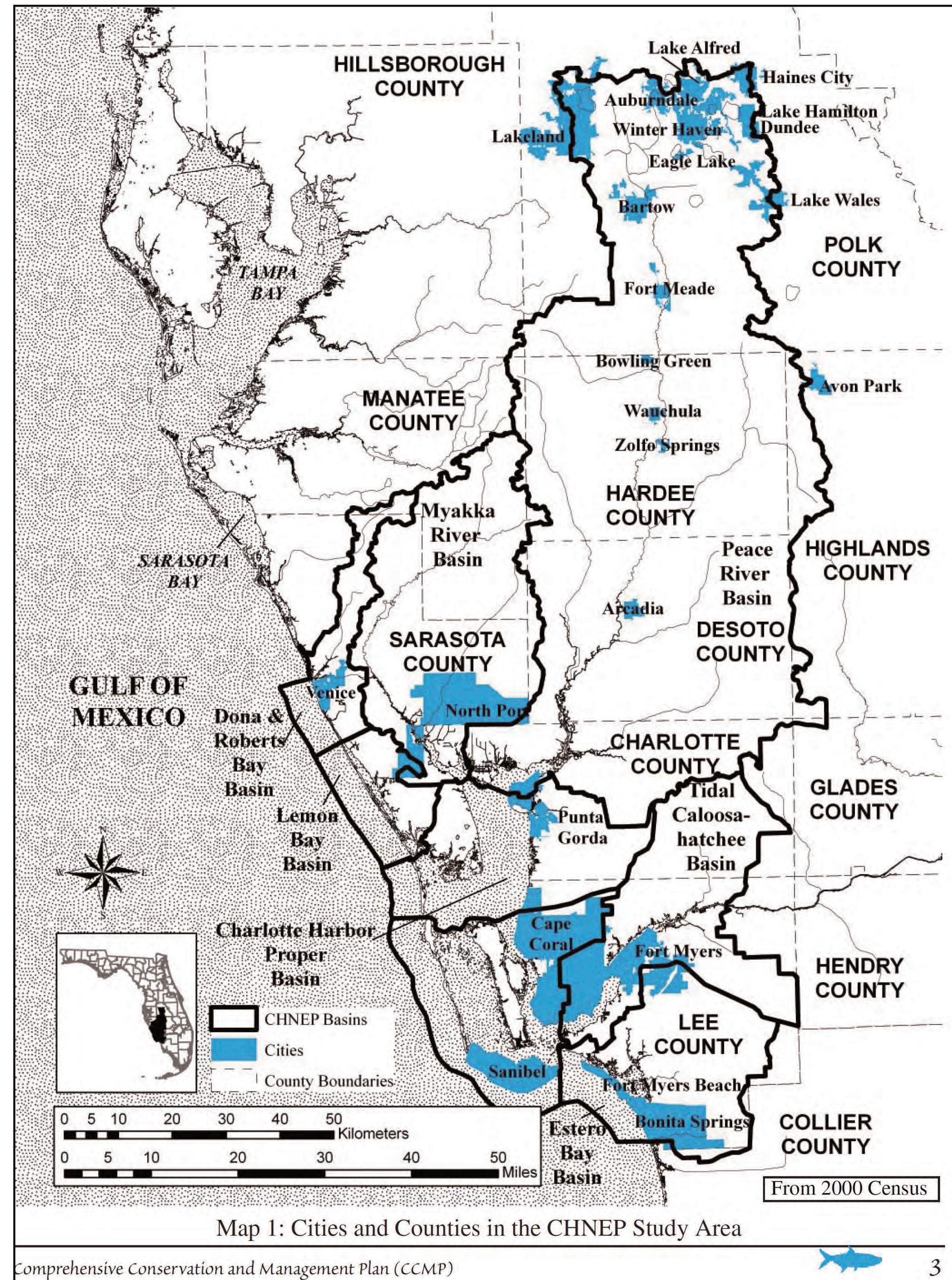


(Source: CHNEP, 2008)



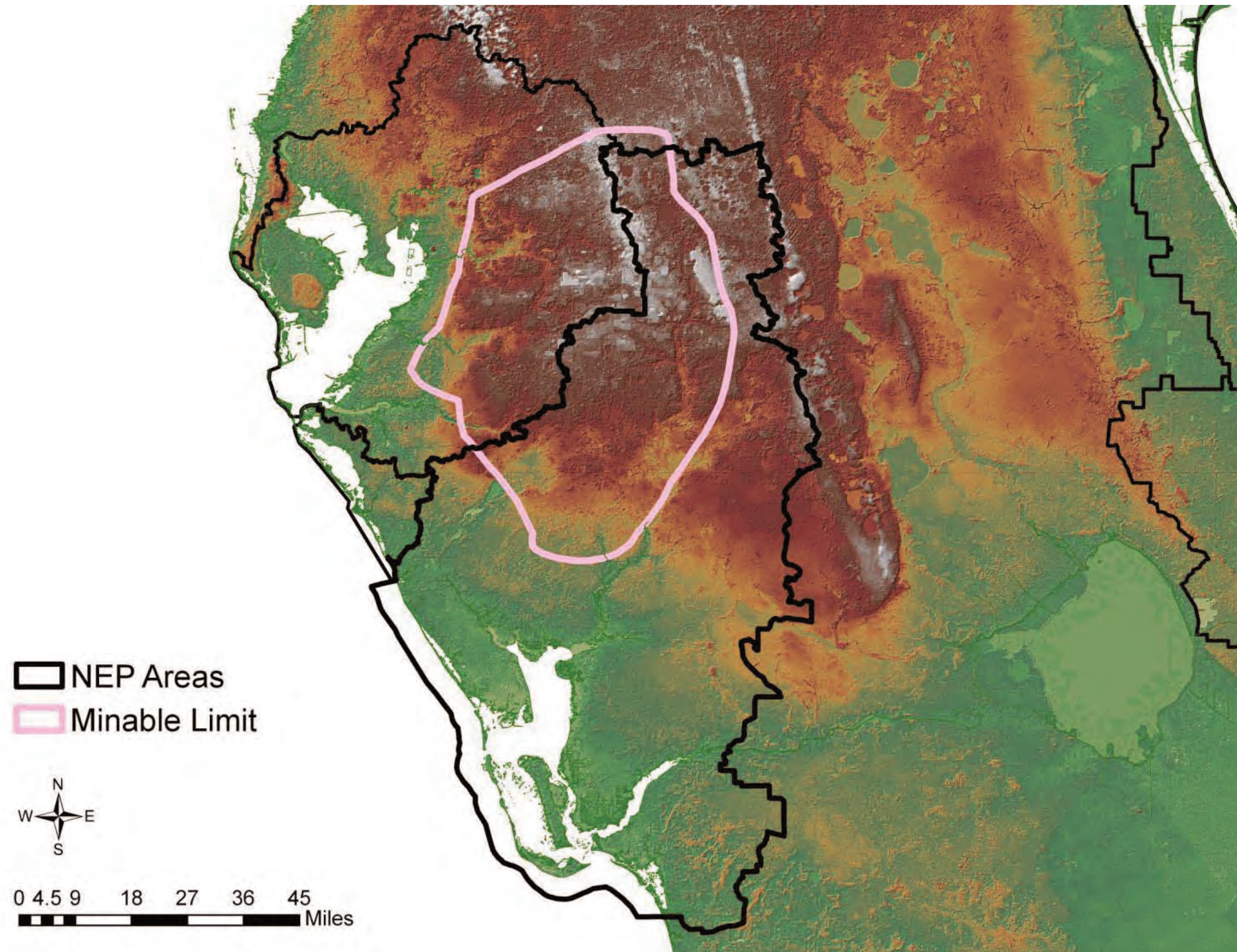
# Water Resources

## AEIS Study Area Key Watersheds, and Relevant City and County Boundaries

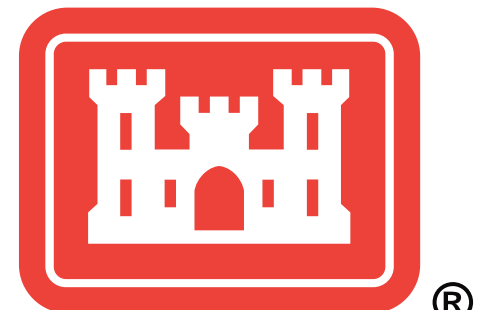


# Water Resources

## Lands Within the Central Florida Phosphate District in Relation to Lands Tributary to SW Florida National Estuaries



(Source: Lisa Beever/CHNEP, 2010)



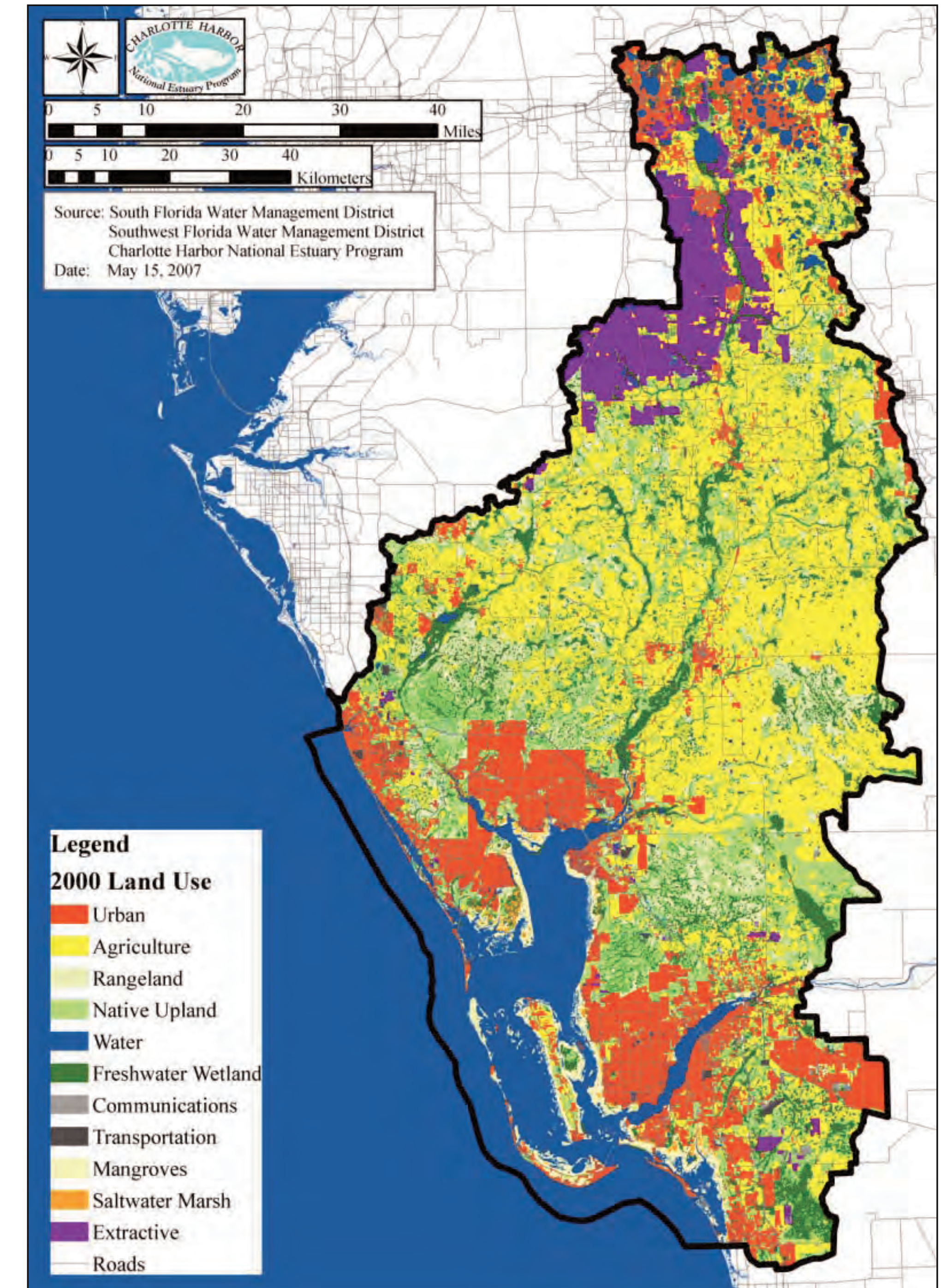
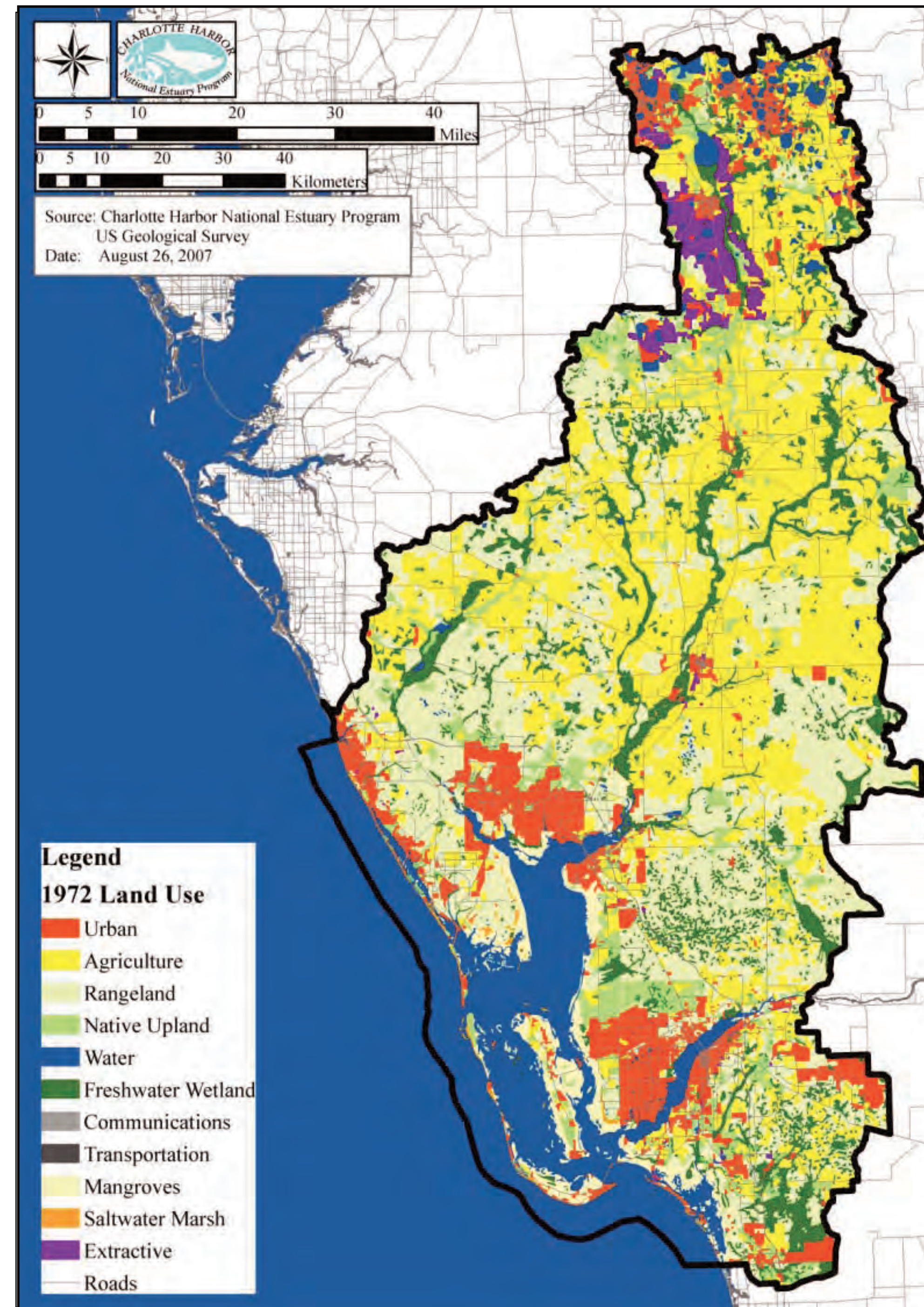
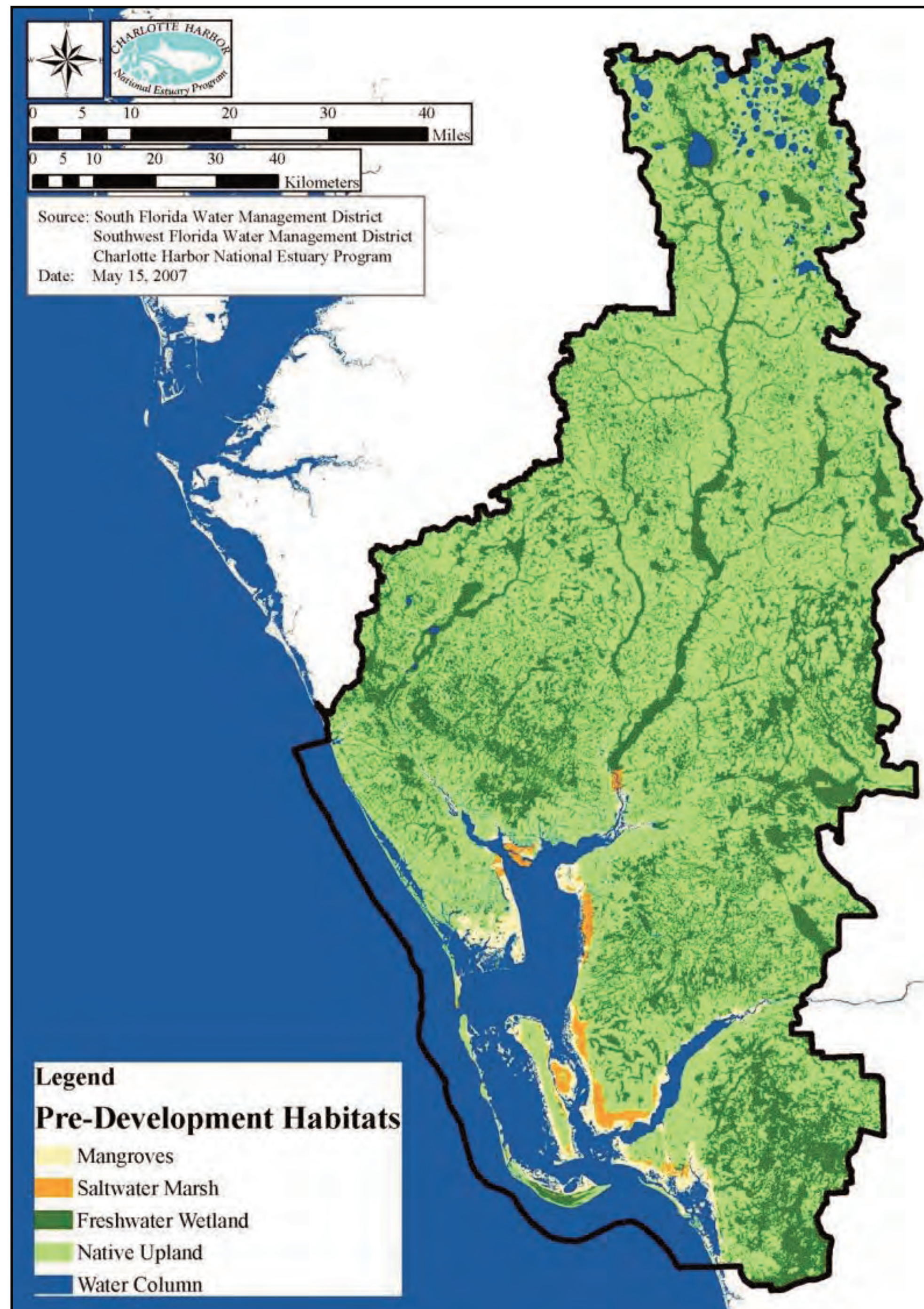
US Army Corps of Engineers  
**BUILDING STRONG**

Areawide Environmental Impact Statement for Continued Phosphate Mining in the Central Florida Phosphate District

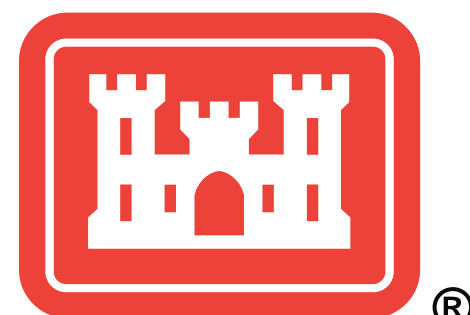
**CH2MHILL.**

# Water Resources

## Land Areas Tributary to the Charlotte Harbor National Estuary: Changes in Land Use Over Time



(Source: Lisa Beever/CHNEP, 2010)



US Army Corps of Engineers  
**BUILDING STRONG**

Areawide Environmental Impact Statement for Continued Phosphate Mining in the Central Florida Phosphate District

CH2MHILL

# Water Resources

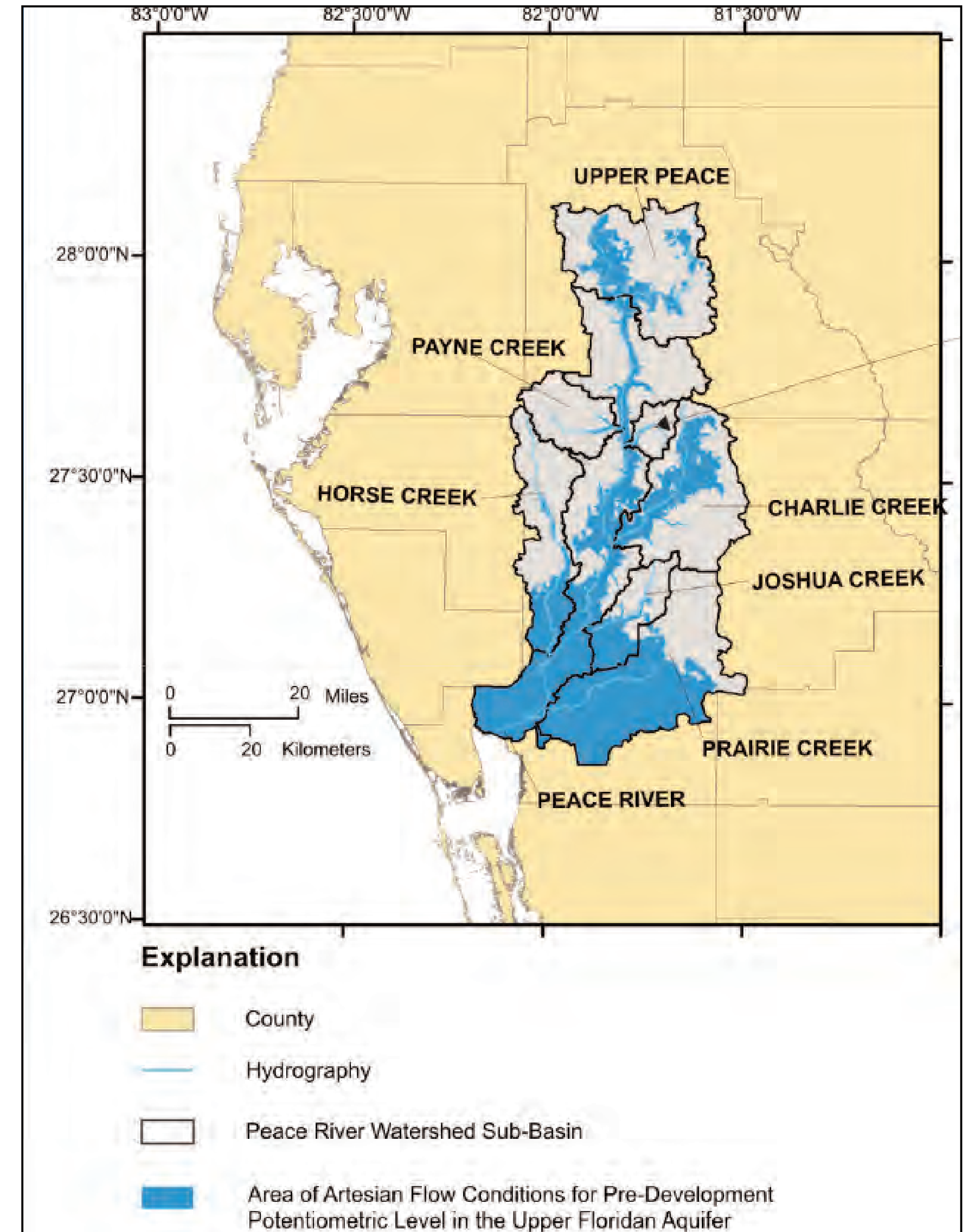
## Ground Water Resources



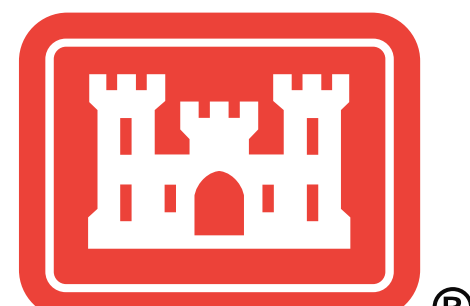
Photo courtesy of László Bencze/Mosaic Fertilizer, 2005

(Source: CHNEP, 2008)

### Regional Water Supply Plan (SWFWMD, 2010)



(Source: Terrie Lee/USGS, 2010)



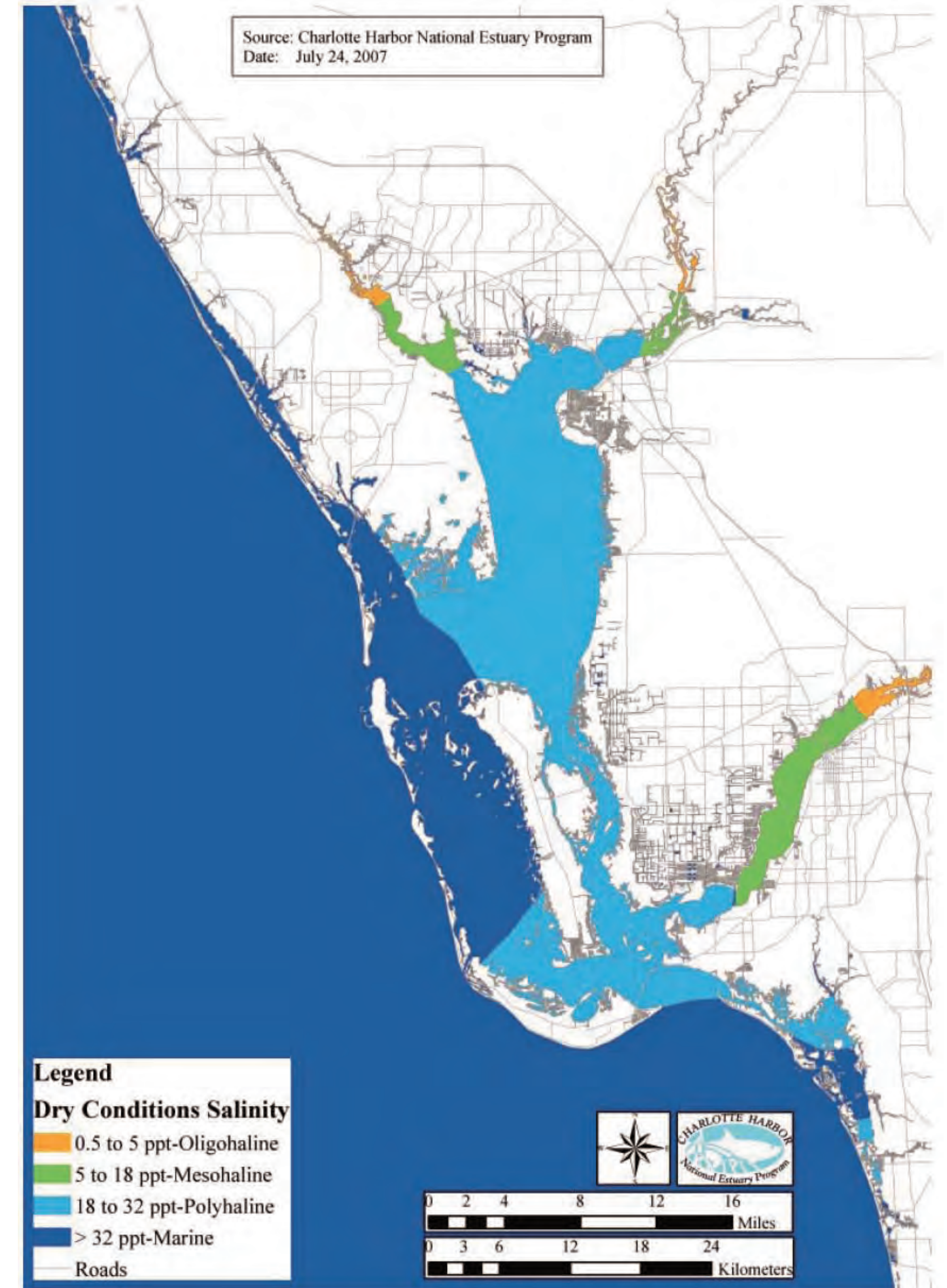
US Army Corps of Engineers  
BUILDING STRONG®

Areawide Environmental Impact Statement for Continued Phosphate Mining in the Central Florida Phosphate District

CH2MHILL.

# Water Resources

## Surface Water Resources



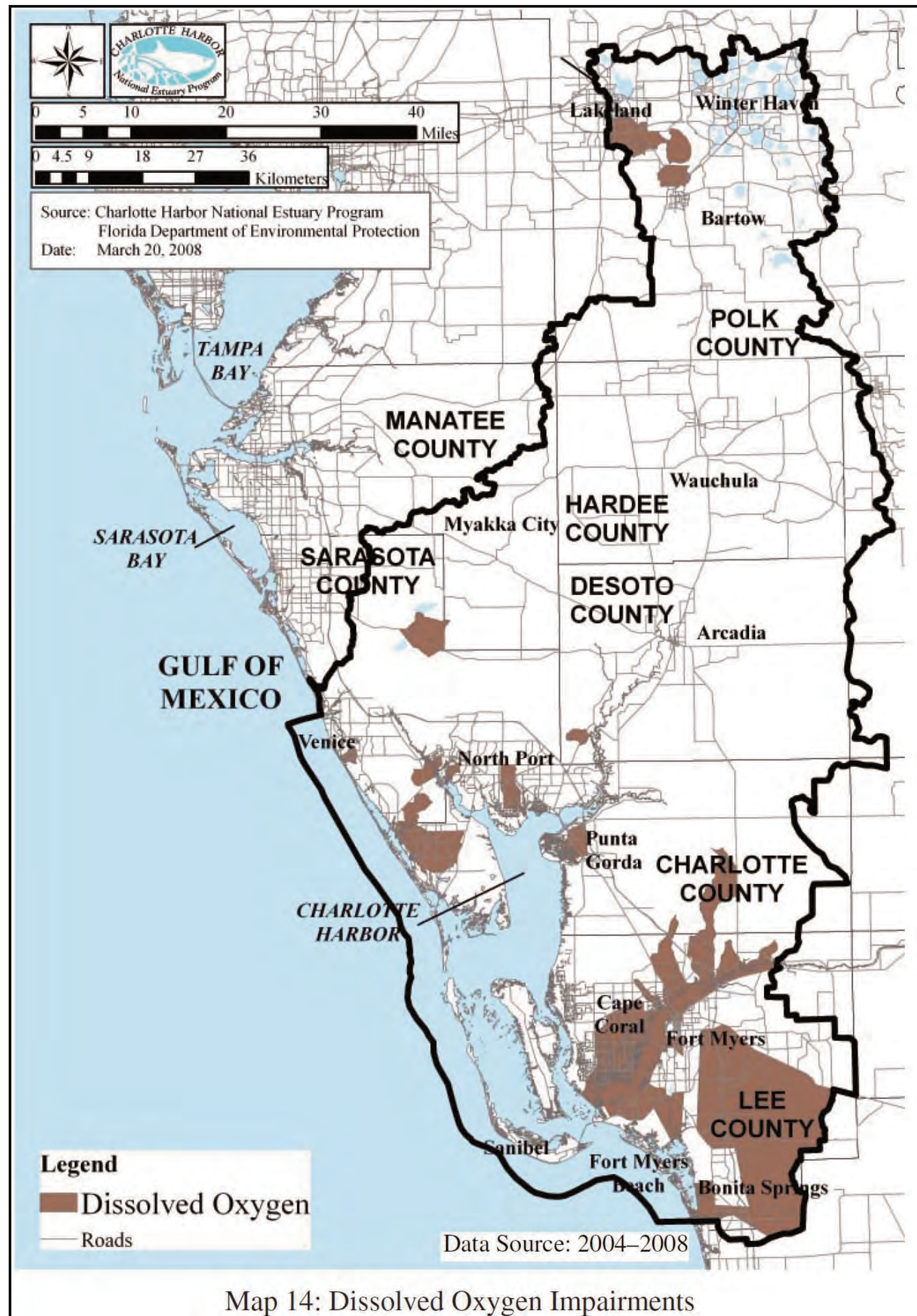
(Source: CHNEP, 2008; Mosaic and CF Industries, 2010)

Map 9: Hydrologic Vision for Dry Conditions

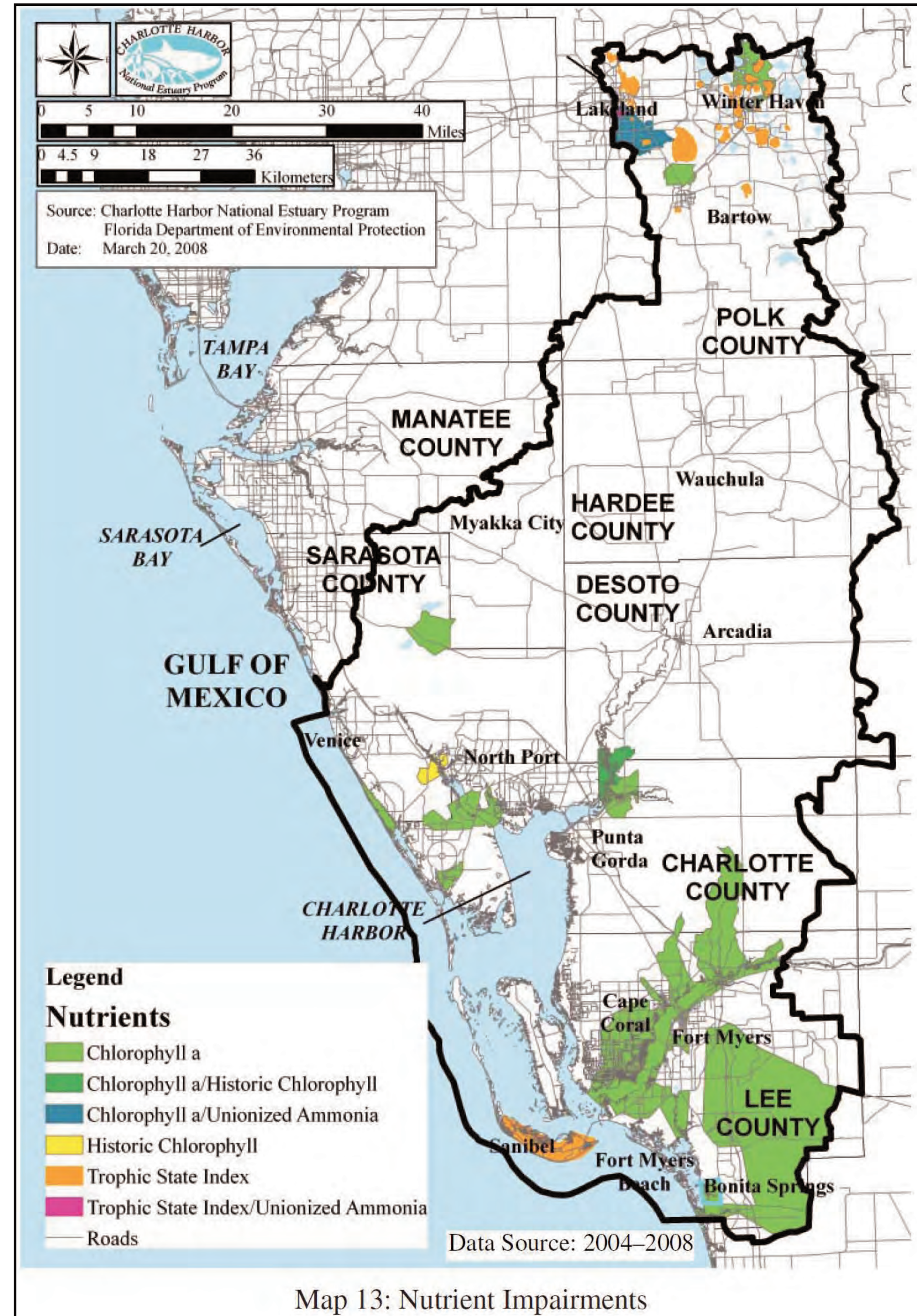
# Water Resources

## Regional Surface Water Quality

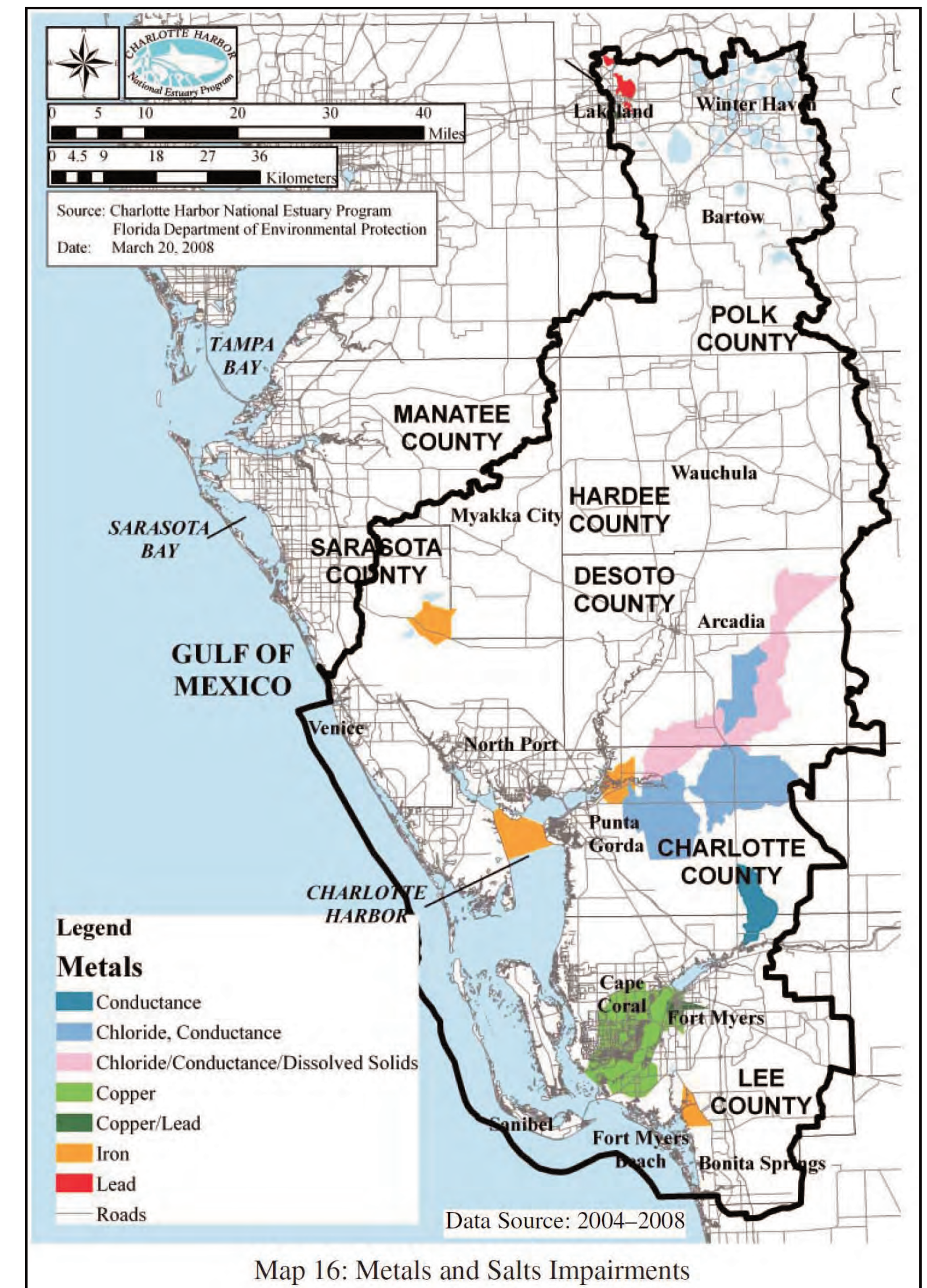
### DISSOLVED OXYGEN



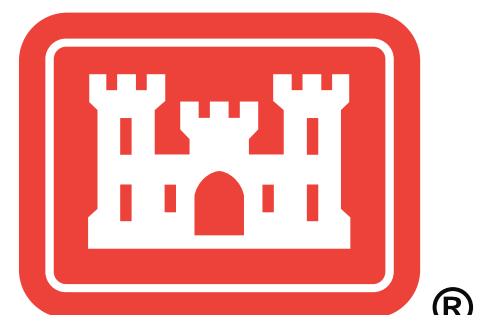
### NUTRIENTS



### METALS & SALTS



(Source: CHNEP, 2008)



US Army Corps of Engineers  
**BUILDING STRONG**






Areawide Environmental Impact Statement for Continued Phosphate Mining in the Central Florida Phosphate District

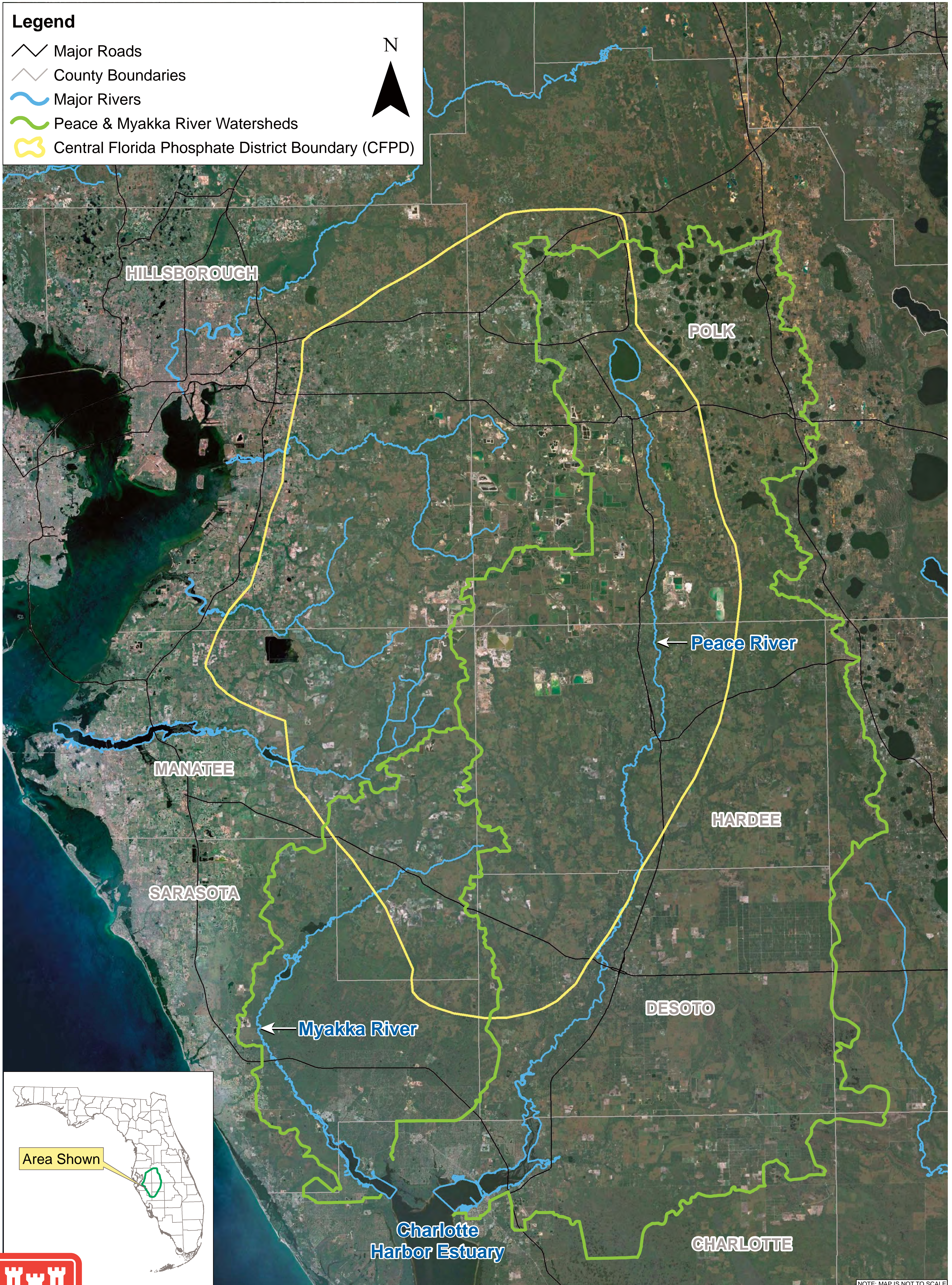
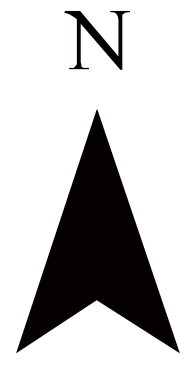
**CH2MHILL**



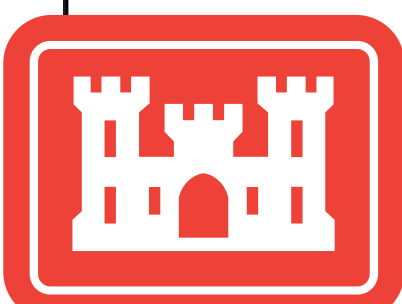
# Location of the Central Florida Phosphate District in Relation to the Peace and Myakka River Watersheds

## Legend

-  Major Roads
-  County Boundaries
-  Major Rivers
-  Peace & Myakka River Watersheds
-  Central Florida Phosphate District Boundary (CFPD)



NOTE: MAP IS NOT TO SCALE



US Army Corps of Engineers  
**BUILDING STRONG**

Areawide Environmental Impact Statement for Continued  
Phosphate Mining in the Central Florida Phosphate District

**CH2MHILL.**